

FIG. 1

**PANIC REMOVAL:**  
 1. REMOVE LOCKING BAR BY LOOSENING SET SCREWS AND SLIDING OUT.  
 2. DEPRESS PANIC DEVICE HALFWAY AND SLIDE OUT IN OPPOSITE DIRECTION.

**DOGGING INSTRUCTIONS:**  
 TO DOG: INSERT DOGGING KEY, TURN APPROX. 90 CLOCKWISE FULLY DEPRESS PUSH BAR, THEN RELEASE DOGGING KEY.  
 TO UNDOG: INSERT DOGGING KEY AND TURN CLOCKWISE.

**INSTALLATION INSTRUCTIONS 3185 MID-RAIL PANIC ASSY**

**ROUTING INSTRUCTIONS:**

1. PREPARE DOOR, HEADER & THRESHOLD PER DWG. NO. 10-1029-1 PG'S. 2 OF 3 & 3 OF 3

**MOUNTING INSTRUCTIONS:**

1. INSTALL AND SECURE ROD AND CASE ASSEMBLY WITH 2 EA. 10-32 x 3/8 F.H.M.S
2. WHEN LOCK MOUNTING PAD BECOMES A REQUIREMENT, INSERT LOCK CYLINDER INTO MOUNTING PAD AND SECURE WITH LOCK RING PROVIDED. ATTACH LOCK MTG. PAD ASSY (L.M.P.) BY INSERTING IT INTO MATCHING HOLES PER STILE AS PER FIG. 1. AND SECURE WITH SET SCREWS FIRMLY AGAINST STILE. (SEE DETAIL "A").

**PANIC INSTALLMENT:**

**NOTES** - ROD AND CASE ASSEMBLY MUST BE IN THE RETRACTED POSITION TO COMPLETE THE FOLLOWING:

1. UN-DOG PANIC DEVICE BY INSERTING 1/8" HEX. KEY AND TURN CLOCKWISE.
2. FOLLOWING DIRECTION OF ARROW AS SHOWN ON FACE OF PANIC DEVICE, SLIDE PANIC INTO INFILL CUT-OUT UNTIL TAB PORTION IS FULLY SECURED AGAINST ACTIVE STILE (MAKING SURE THAT ACTUATOR LEVER IS POSITIONED BELOW LIFT PIN ON ROD AND CASE ASSEMBLY).  
 :TO ACHIEVE FULL ENGAGEMENT, SLIGHTLY LIFT PANIC WHILE SLIDING INTO FINAL POSITION.

3. INSTALL LOCKING BAR BY SLIDING BEHIND RIBBING OF MID-RAIL UNTIL IT STOPS AGAINST INACTIVE TAB AS SHOWN. SECURE LOCKING BAR WITH 2 EA. 8-32 x 5/16 SET SCREWS. (TIGHTEN FIRMLY)
4. INSTALL AND SNAP IN FILLER COVER.

**TOP PULLMAN LATCH ASS'Y INSTALLMENT**

1. ROTATE LATCH ASSEMBLY WITH NYLON SPACER AS PER FIG. (1) UNTIL SLOT INDICATOR ( ) ALIGNS ITSELF WITH THE MIDDLE OF UPPER C'SUNK MTG. HOLE. (PANIC ASSEMBLY AND ROD AND CASE ASS'Y MUST BE IN THE UNDOGGED POSITION.)
2. ONCE OVAL SHAPED SLOT REACHES MIDDLE OF UPPER C-SUNK HOLE ON STILE REMOVE NYLON SPACER THEN DEPRESS TRIGGER PORTION. PULLMAN LATCH WILL SHIFT VERTICALLY APPROX. 1/2" ALLOWING FOR INSTALLMENT OF 2 EA. 10-32x1/4 FHMS UNDERCUT. NOTE-EACH HOLE AT THIS POINT MUST BE ALIGNED OR MATCH C'SINK ON DOOR STILE.

**OPERATIONS CHECK:**

1. DEPRESS PANIC FULLY, TOP LATCH SHOULD ROTATE FLUSH WITH STILE AND BOTTOM BOLT WILL MOVE FLUSH WITH BTM STILE. MANUALLY DEPRESS TRIGGER ALLOWING FOR ENTIRE SYSTEM TO DIS-ENGAGE.

**REMOVAL, RE-ADJUSTMENT OR REPLACEMENT:**

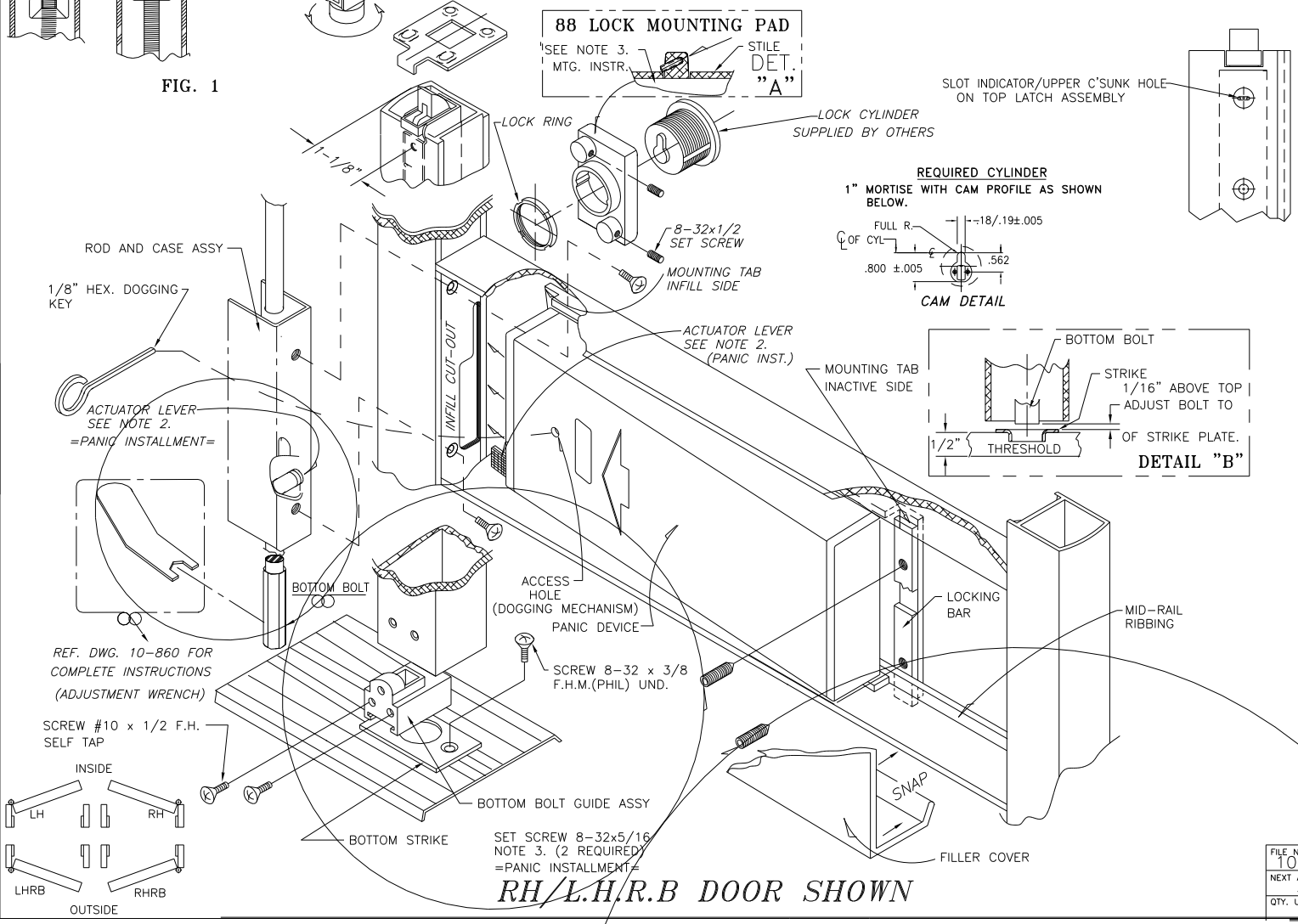
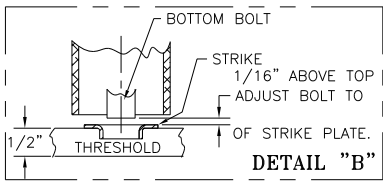
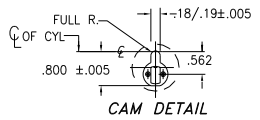
1. IF SYSTEM DOES NOT REACT OR RELEASE, REMOVE FASTENERS AND ROTATE PULLMAN ASS'Y ONE ROTATION CLOCKWISE OR COUNTERCLOCKWISE, THEN REPEAT STEP #2. NOTE: TOP LATCH WILL NEED TO BE PULLED UPWARDS TO THE OPEN POSITION, NYLON SPACER NEEDS TO BE INSERTED AGAIN BEFORE THE LATCH ASSEMBLY WILL ROTATE.

**BOTTOM BOLT ADJUSTMENT:**

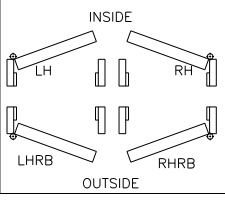
1. FULLY DEPRESS PUSH BAR, RETRACTING PULLMAN LATCH AND BOTTOM ROD. ADJUST BOTTOM BOLT PER DETAIL "B"



**REQUIRED CYLINDER**  
 1" MORTISE WITH CAM PROFILE AS SHOWN BELOW.

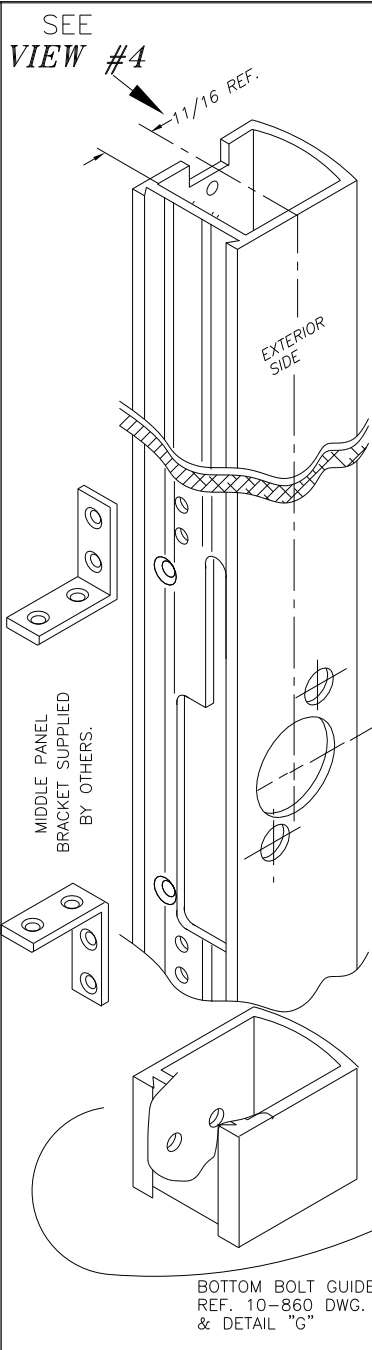


**RH/L.H.R.B DOOR SHOWN**

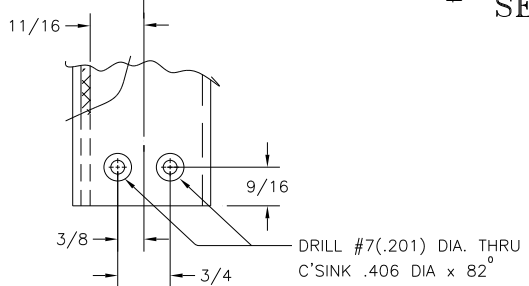
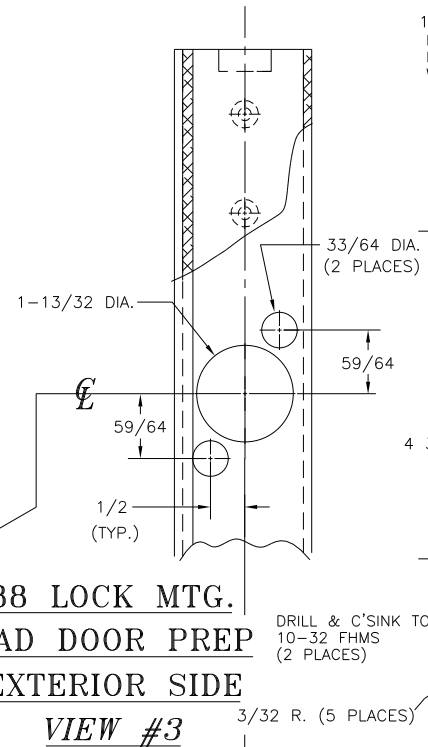


A 04/10/02 REVISED 3185 W/PULLMAN LATCH		ECN1570		RM
DIMENSIONAL TOLERANCES UNLESS OTHERWISE SPECIFIED		APPROVALS		DATE
DECIMAL DIMENSIONS .XX ± .010	CHECKED			
ANGULAR ± °	FRACTIONAL ± 1/64	DRAWN	R.M.	04/09/02
FILE NO. 1029-1	NEXT ASSY. 3185-KITS	SCALE	NONE	
QTY. USED	HEAT TREAT	FINISH	ROUTING INSTRUCTIONS	SHEET 1 OF 3 SHEETS
			3185 MID-RAIL PANIC DEVICE W/PULLMAN LATCH	DWG. NO. 10-1029
				REV. A



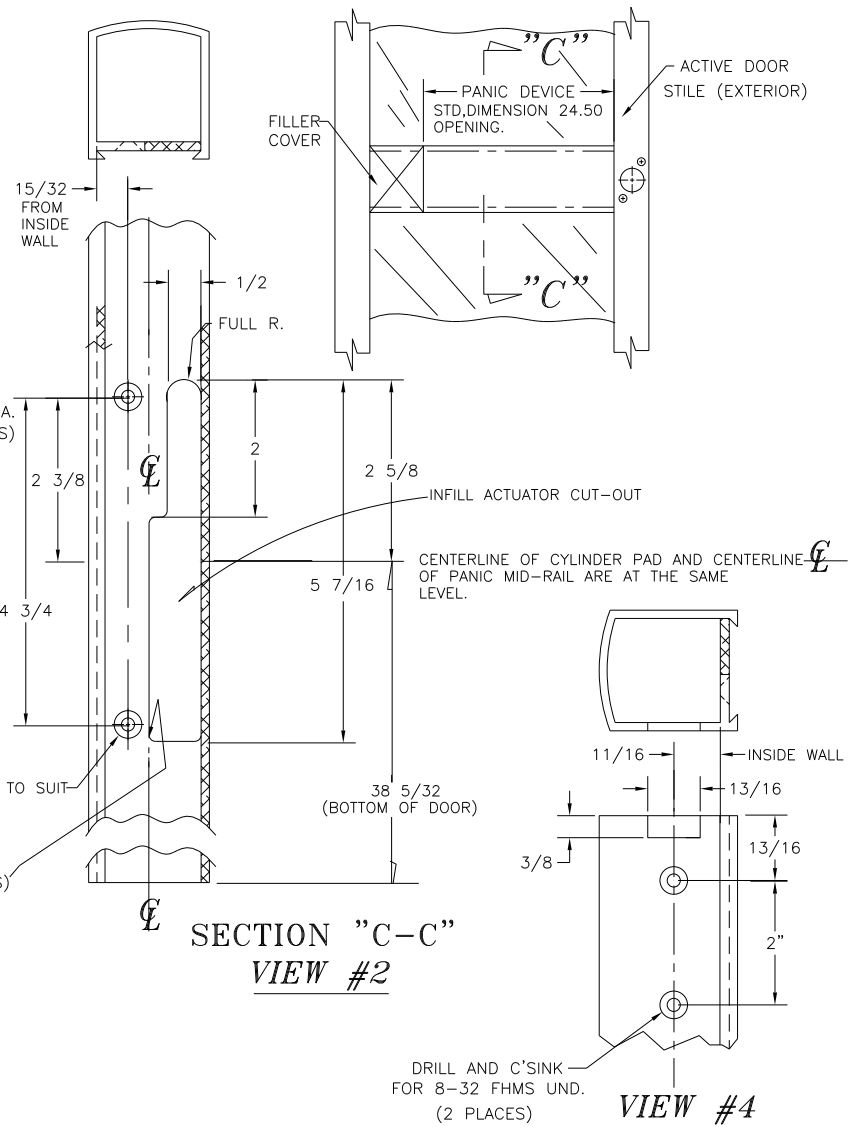


**88 LOCK MTG.  
PAD DOOR PREP  
EXTERIOR SIDE  
VIEW #3**



**DETAIL VIEW  
"G"  
VIEW #1**

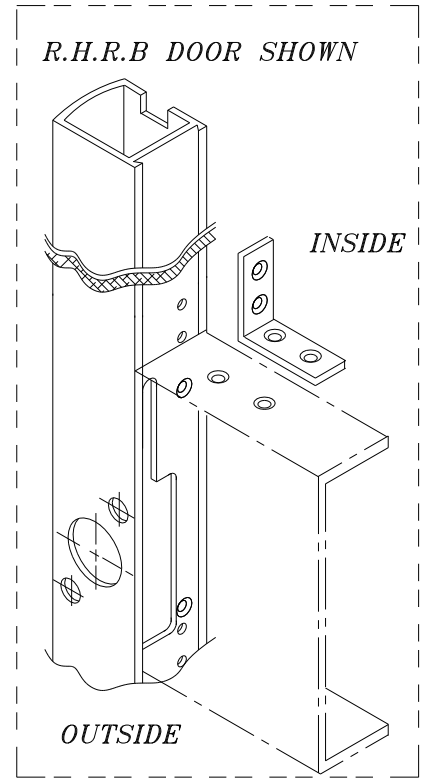
BOTTOM BOLT GUIDE  
REF. 10-860 DWG.  
& DETAIL "G"



**L.H.R.B DOOR SHOWN**

**DOOR AND FRAME PREPARATIONS**

1. PREPARE ACTIVE STILE FOR BOTTOM GUIDE. (VIEW #1) AND PULLMAN LATCH (VIEW #4)
2. PREPARE ACTIVE STILE (INFILL SIDE PER VIEW #2)
3. WHEN USING A LOCK MOUNTING PAD, PREPARE STILE PER VIEW #3
4. FOR MOUNTING & ADJUSTMENT INSTRUCTIONS OF 3185 PANIC DEVICE SEE PAGE 1 OF 3 (DWG. 10-1029-1)

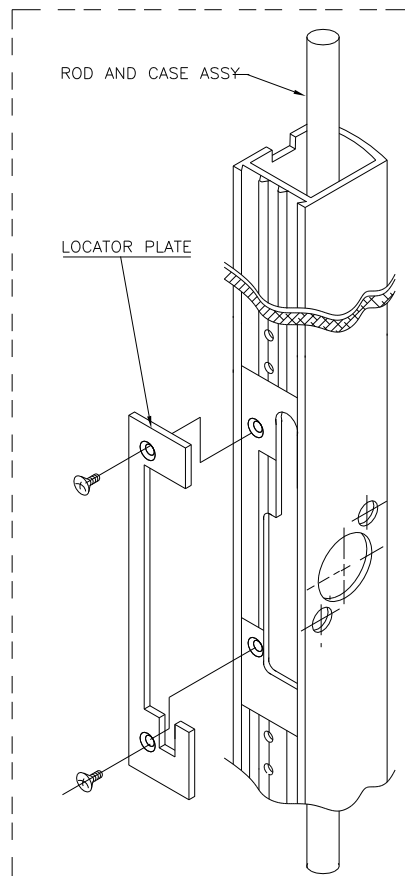
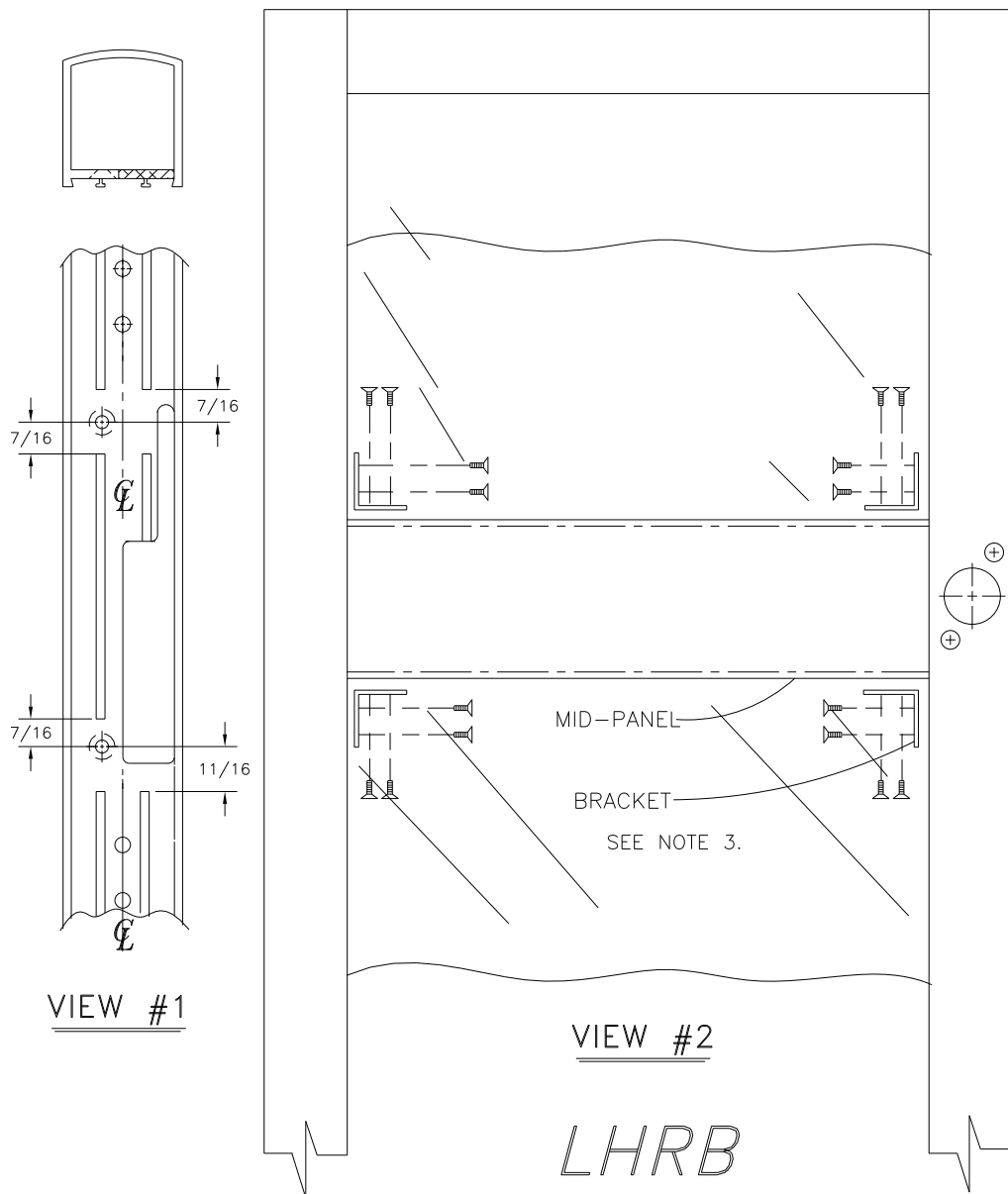


A 04/10/02 REVISED 3185 W/PULLMAN TOP LATCH		ECN1570	RM
DIMENSIONAL TOLERANCES UNLESS OTHERWISE SPECIFIED		APPROVALS DATE	
DECIMAL DIMENSIONS .XX ± .010		APPROVED	
DECIMAL DIMENSIONS .XXX ± .005		CHECKED	
ANGULAR ± ° FRACTIONAL ± 1/64		DRAWN	RM 04/09/02
MATERIAL	SCALE	NONE	
FINISH	ROUTING INSTRUCTIONS		
HEAT TREAT	3185 MID-RAIL PANIC DEVICE		
FILE NO. 1029-2	NEXT ASSY. 3185-KITS	DWG. NO. 10-1029	REV. A



**DOOR AND ROD CASE ASSY SEQUENCE**

1. MILL IN-FILL SECTION OF ACTIVE TO ACCEPT LOCATOR PLATE SHOWN IN (VIEW #1)
2. INSERT ROD AND CASE ASSY INTO POSITION ALLOWING FOR ATTACHMENT OF LOCATOR PLATE TO CASE ASSY PER (VIEW #3) . SECURE WITH 2 EA. 10-32 FHMS.
3. INSTALL MID-PANEL AND SECURE ANGLE BRACKETS AS SHOWN. VIEW #2 (SUPPLIED BY OTHERS)
4. FOR MOUNTING & ADJUSTMENT INSTRUCTIONS OF 3185 PANIC DEVICE SEE OPPOSITE SIDE THIS PAGE (DWG. 10-1029-1 SHT. 1 OF 3).



A 04/10/02 REVISED 3185 W/PULLMAN TOP LATCH		ECN1570 RM	
DIMENSIONAL TOLERANCES UNLESS OTHERWISE SPECIFIED		APPROVED	DATE
DECIMAL DIMENSIONS .XX ± .010		CHECKED	
DECIMAL DIMENSIONS .XXX ± .005		DRAWN	RM 04/10/02
ANGULAR ± ° FRACTIONAL ± 1/64		SCALE	NONE
FILE NO. 1029-3	MATERIAL	SHEET 3 OF 3 SHEETS	
NEXT ASSY 3185 KITS	FINISH	MID-PANEL AND ROD & CASE INSTALLATION	DWG. NO. 10-1029
QTY. USED	HEAT TREAT		REV. A

